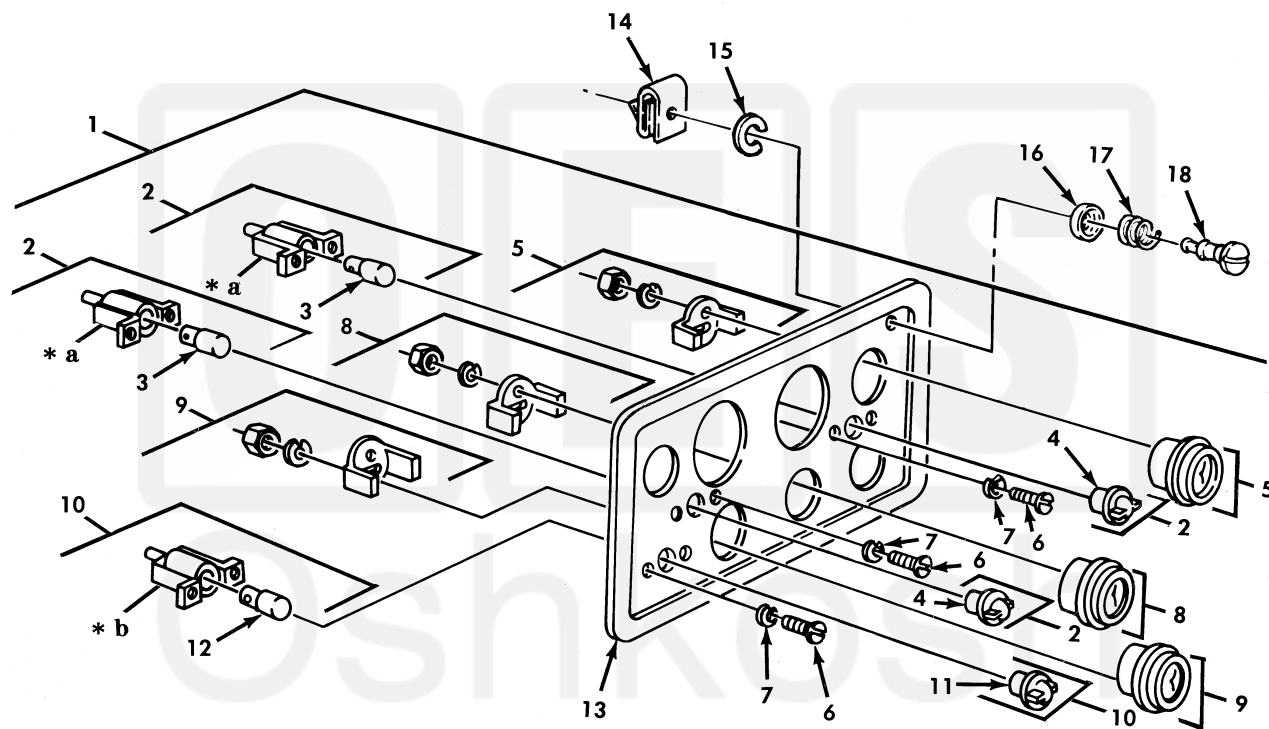


UNIT, DIRECT SUPPORT, AND GENERAL SUPPORT MAINTENANCE  
REPAIR PARTS AND SPECIAL TOOLS LIST  
TRUCK, 5-TON, 6X6, M809 SERIES TRUCKS (DIESEL)



**NOTE: FOR VEHICLES WITH TACHOGRAPH  
INSTRUMENT CLUSTER, SEE FIGURE 496**

- \* a PART OF ITEM 2**
- \* b PART OF ITEM 10**

*Figure 95. Instrument Cluster Assembly.*

(1) ITEM NO	(2) SMR CODE	(3) NSN	(4) CAGEC	(5) PART NUMBER	(6) DESCRIPTION AND USABLE ON CODE (UOC)	(7) QTY
GROUP 0607 INSTRUMENT OR ENGINE CONTROL PANEL						
FIG. 95 INSTRUMENT CLUSTER ASSEMBLY						
1	PAOZZ	2510-00-409-7969	19207	11664553	PANEL, INDICATOR.....	1
2	PAOOO	6210-00-699-9458	19207	8376500	. LIGHT, INDICATOR.....	2
3	PAOZZ	6240-00-266-9940	96906	MS25231-1829	.. LAMP, INCANDESCENT.....	1
4	PAOZZ	6210-00-337-7345	19207	7358621	.. LENS, LIGHT.....	1
5	PAOZZ	6685-00-936-2139	96906	MS24543-2	. INDICATOR, TEMPERATU.....	1
6	PAOZZ	5305-00-984-6189	96906	MS35206-241	. SCREW, MACHINE.....	6
7	PAOZZ	5310-00-045-3299	96906	MS35338-42	. WASHER, LOCK.....	6
8	PAOZZ	6625-01-086-9580	96906	MS24532-2 REVG	. METER, SPECIAL SCALE VOLTAGE INDICATOR.....	1
9	PAOZZ	6680-00-933-3600	96906	MS24544-2	. INDICATOR, LIQUID QU FUEL GAGE.....	1
10	PAOOO	6210-00-699-9457	19207	8376499	. LIGHT, INDICATOR.....	1
11	PAOZZ	6210-00-299-5564	19207	7358622	.. LENS, LIGHT.....	1
12	PAOZZ	6240-00-266-9940	96906	MS25231-1829	.. LAMP, INCANDESCENT.....	1
13	PAOZZ	2510-00-089-3775	19207	7971605	. PANEL, INSTRUMENT MO.....	1
14	PAOZZ	5325-00-998-3351	94222	85-47-101-15	RECEPTACLE, TURNLOCK PART OF KIT P/N 57K0154.....	1
15	PAOZZ	5310-00-822-8525	18876	9177101	WASHER, SPLIT.....	1
16	PAOZZ	5310-01-128-6503	94222	85-46-101-41	WASHER, RECESSED PART OF KIT P/N 57K0154.....	1
17	PAOZZ	5360-01-128-6186	94222	14-18-150-24	SPRING PART OF KIT P/N 57K0154.....	1
18	PAOZZ	5325-00-944-7691	94222	85-11-280-17	STUD, TURNLOCK FASTE PART OF KIT P/N 57K0154.....	1

END OF FIGURE

